

Design Statement for Wildlife Ponds to be created at Wakelyns.

General statement of pond design:

These wildlife ponds are to be created to benefit Great Crested Newt populations in the local area, as a part of mitigative provision through the District Level Licencing scheme devised and run by Natural England. Further information on this scheme can be found [here](#).

The ponds will be created based on the following criteria:

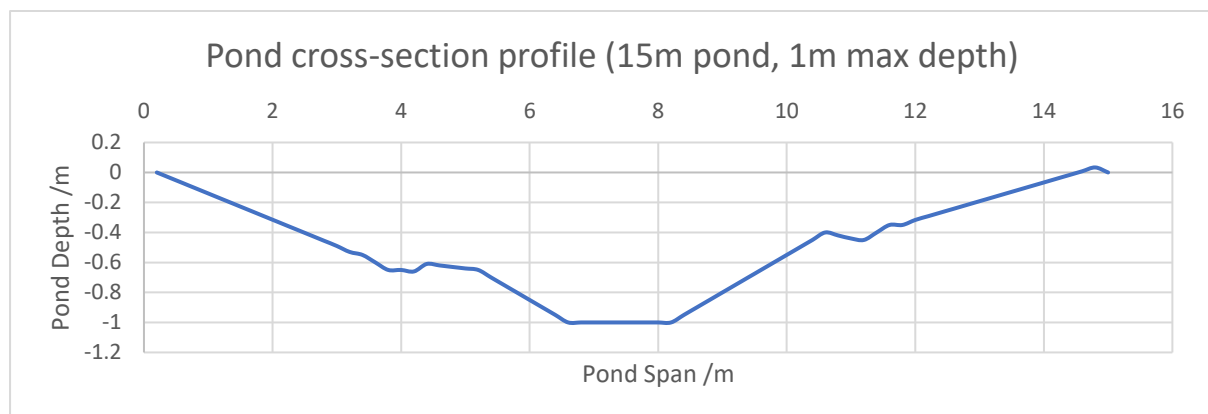
- Surface area between 150m² and 1000m²;
- Central depth of at least 1m (up to 2.5m for the largest ponds);
- Variable bank gradients of 1:10, or ideally 1:20;
- A range of depths across the pond;
- Located in areas of good quality terrestrial habitat;
- Terrestrial buffer zone of *at least* 3m around each pond;
- Ponds in clusters (within 250m generally), rather than in isolation;
- Absence of shading on the south side;
- Absence of fish;
- Absence or low density of waterfowl;
- Good water quality, with negligible run-off from agriculture and roads.

Creation of these ponds will benefit the population of Great Crested Newt already in evidence in the existing ponds in this area, as well as having many wider benefits for wildlife over time.

Indicative design images:

Below water pond profile:

The image below gives an indication of the cross section of the below water profile for a 15m span pond (similar to the smallest created ponds). This image shows varying depths, shelves and gently sloping banks, all of which form part of general good practice wildlife pond design and contribute to meeting the design criteria above.



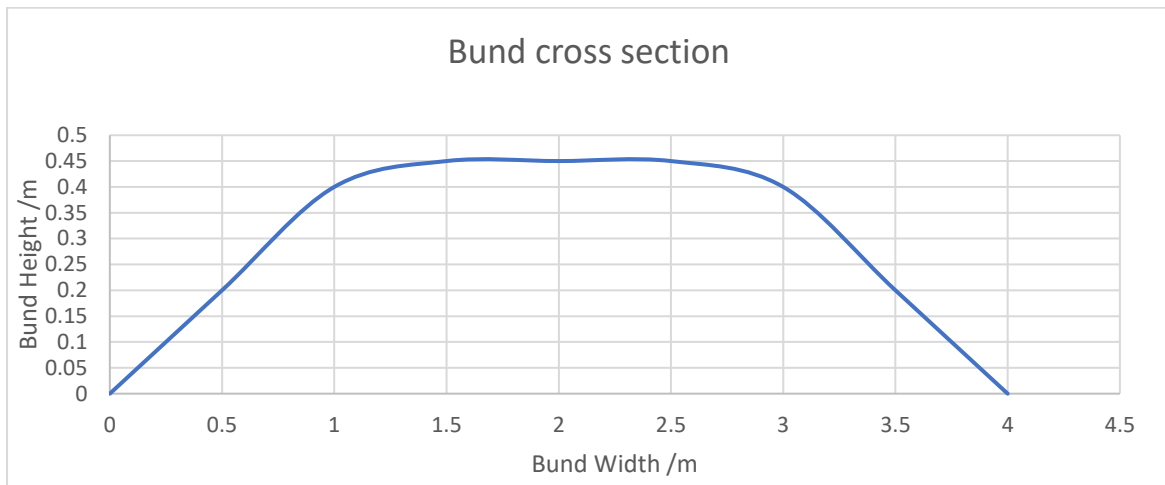
The general details of this design will be applicable to the created ponds, small and large, with the approach during creation being to provide a wide range of underwater profile features that benefit Great Crested Newts and other pond wildlife. Larger ponds will be of somewhat greater depth and may accommodate small deeper sections that hold water during the process of summer drying, as a series of small pools.

Arisings will be disposed of by spreading thinly on agricultural land in accordance with a U10 waste exemption licence.

Pond bank design:

Excavation of these ponds will create some arising material. Further benefit to wildlife can be achieved by creating low earth bunds nearby that are permitted to grow tussocky grasses and scrub. Bunds will generally be of loose construction and located such that they do not pose a runoff risk to the newly excavated pond – nearby but away from the edge, or on the downslope side of a pond.

Design of these bunds will be simple and consist of a bund top at less than 500mm above ground level. Sides will be battered to create gentle slopes and in time will provide niche opportunities for a range of wildlife. Bund widths will vary dependant on location, an indicative cross section is shown below.

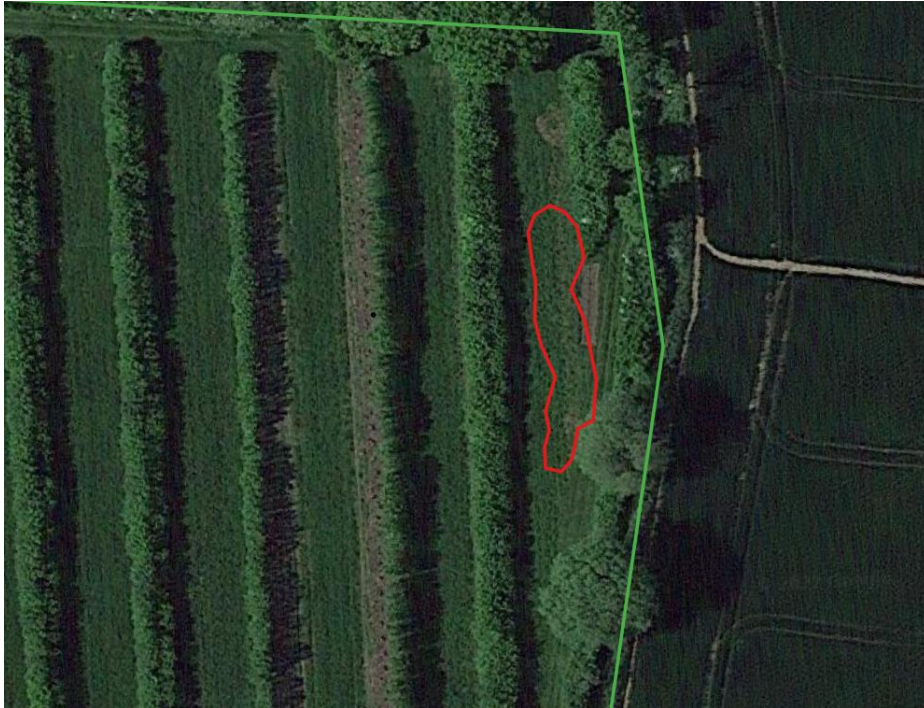


Summary of design features for ponds proposed at Wakelyns:

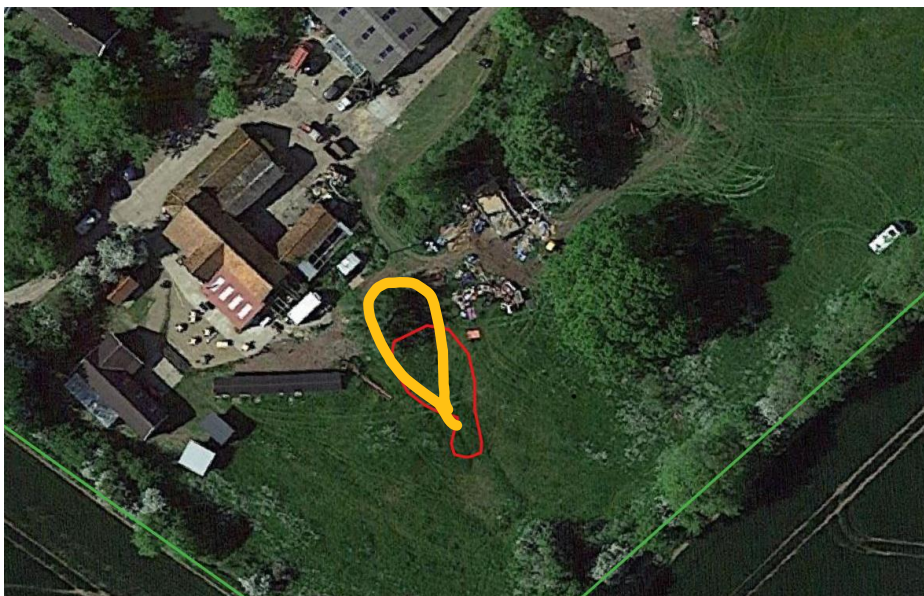
Design Element		
	1	2
Proposed pond area	300m ²	150m ²
Proposed bund area	N/A	N/A
Bund location	N	N
Maximum proposed depth	1.5m	1.5m
Shallow banks	Y	Y
Incorporated deeper pools	Y	Y

Aerial photos showing proposed location and design.

Pond 1 – located within former agroforestry ride



Pond 2 – located in meadow



For any further information on the design intent for these ponds, please contact Jenny at the Suffolk Wildlife Trust.

Jenny Rawson

07553 587056

Jenny.rawson@suffolkwildlifetrust.org